



How to Install & Activate a Standalone
SOLIDWORKS Add-In

Scenarios where this guide is applicable:

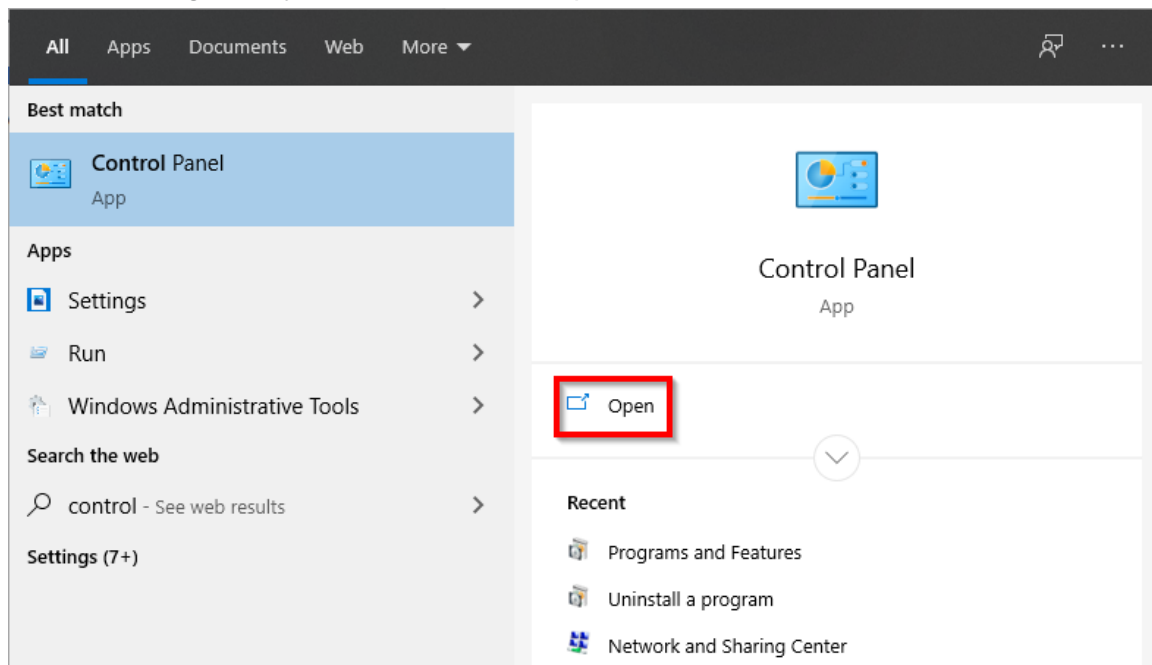
1. You are installing a **trial/eval** version of a SOLIDWORKS add-in product
2. You purchased a SOLIDWORKS add-in **term license**
3. You are installing a perpetual **standalone** add-in product

The instructions outlined in this guide assume SOLIDWORKS CAD (network or standalone) is already installed on the PC and you are installing a standalone version of one of the products listed below:

- SOLIDWORKS Simulation
- SOLIDWORKS Flow Simulation
- SOLIDWORKS Plastics
- SOLIDWORKS Inspection
- SOLIDWORKS Composer
- SOLIDWORKS MBD
- SOLIDWORKS Visualize Professional
- SOLIDWORKS CAM (if purchased separately)
- SOLIDWORKS Electrical
- SOLIDWORKS PCB

INSTALLATION

STEP 1: Navigate to your Start menu and open the **Control Panel**:



STEP 2: From the Control Panel, select **Uninstall a Program**:

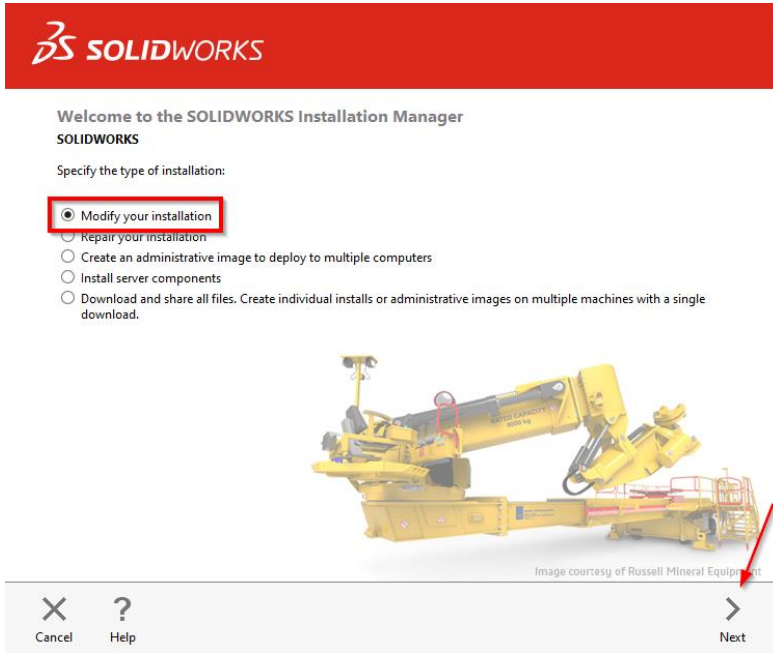
The screenshot shows the Windows Control Panel with several categories listed. The 'Programs' category is expanded, and 'Uninstall a program' is highlighted with a red rectangular box. Other categories include System and Security, Network and Internet, Hardware and Sound, User Accounts, Appearance and Personalization, Clock and Region, and Ease of Access.

STEP 3: Select **SOLIDWORKS** and click **Change**:

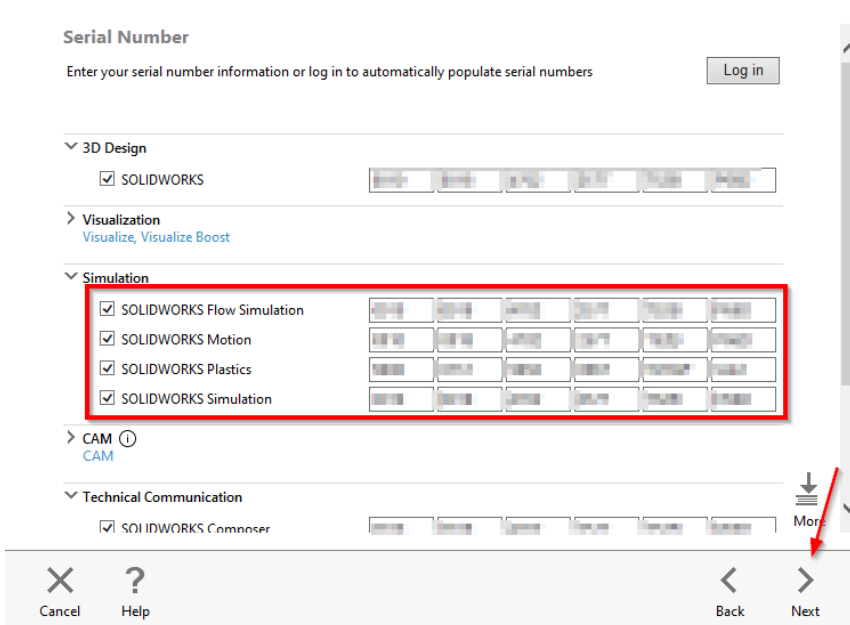
The screenshot shows the 'Programs and Features' window in Windows. The 'SOLIDWORKS' entry is selected in the list. A red arrow points to the 'Change' button in the top toolbar. The window title is 'Programs and Features' and the address bar shows 'Control Panel > Programs > Programs and Features'. The list of programs includes various drivers and utilities, with 'SOLIDWORKS' highlighted in blue. At the bottom, there is a SolidWorks logo and product information: 'SolidWorks Corporation Product version: 26.3.0.63'. Support and help links are also provided.

Name	Publisher	Size	Version
Notepad++ (64-bit x64)	Notepad++ Team	11.1 MB	7.5.6
NVIDIA 3D Vision Controller Driver 369.04	NVIDIA Corporation		369.04
NVIDIA 3D Vision Driver 386.07	NVIDIA Corporation		386.07
NVIDIA Graphics Driver 386.07	NVIDIA Corporation		386.07
NVIDIA HD Audio Driver 1.3.36.6	NVIDIA Corporation		1.3.36.6
NVIDIA WMI 2.30.0	NVIDIA Corporation		2.30.0
Realtek Card Reader	Realtek Semiconduct Corp.	14.6 MB	10.0.10586.21287
Snagit 11	TechSmith Corporation	104 MB	11.2.1
SoftLINK Class Control	Applied Computer Systems, Inc.	263 MB	12.00.0006
Softphone	Avaya	66.1 MB	32.6.4595
SOLIDWORKS	SolidWorks Corporation		
Synaptics Pointing Device Driver	Synaptics Incorporated	46.4 MB	19.0.19.65
Synaptics WBF Fingerprint Reader	Synaptics	19.0 MB	4.5.324.0
Thunderbolt(TM) Software	Intel Corporation	2.70 MB	15.3.40.275
Trend Micro Security Agent	Trend Micro Inc.	113 MB	6.3.1297
Update for Windows 10 for x64-based Systems (KB4023057)	Microsoft Corporation	590 KB	2.45.0.0
UPG	Geometric America's, Inc.		3.0.0
WatchGuard Mobile VPN with SSL client 12.0	WatchGuard	7.20 MB	
Windows 10 Update Assistant	Microsoft Corporation	5.00 MB	1.4.9200.22350
WPTx64	Microsoft	32.0 MB	8.100.26866

STEP 4: Select the **Modify the Individual Installation** option and click **Next**:



STEP 5: Check the box next to the add-in(s) you're installing, enter the **Add-in serial number(s)**, and click **Next**:



STEP 6: Verify desired products are selected and click **Next**:

Product Selection
Select products to add or remove.
* Indicates a change has been made.

SOLIDWORKS Premium [Select different packages or products](#)

- SOLIDWORKS
- SOLIDWORKS Languages
- eDrawings
- SOLIDWORKS File Utilities
- SOLIDWORKS Flow Simulation
- PV360 Network Client (319 MB)
- SOLIDWORKS Simulation Worker Agent
- SOLIDWORKS Plastics
- SOLIDWORKS Electrical (654 MB)
- SOLIDWORKS Composer
- SOLIDWORKS Inspection
- SOLIDWORKS Visualize (3.2 GB)

Select a product to see its description.

Estimated additional space required: 0 KB
Does not include the size of any downloads.

Cancel Help Back Next

STEP 7: Select **Modify Now**:

Summary
You are modifying 2020 SP1.0.

Products to Add [Change](#)

There are no products selected. Click **CHANGE** to choose your products.

Products to Remove [Change](#)

There are no products selected. Click **CHANGE** to choose your products.

Download Options [Change](#)

Installation Location [Change](#)

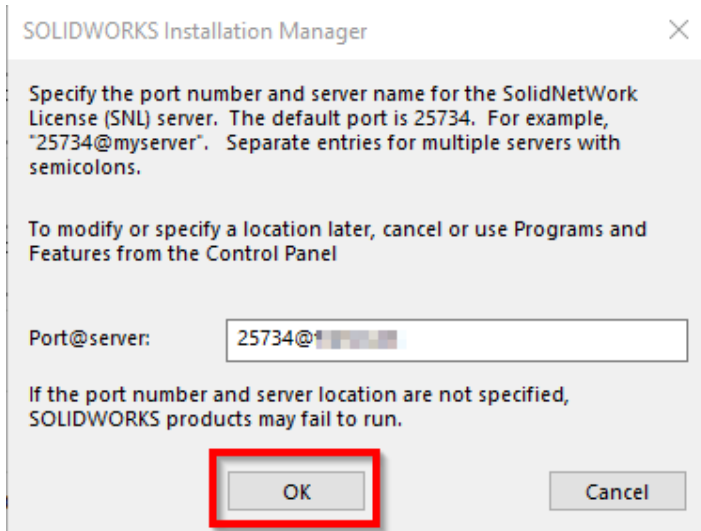
Toolbox/Hole Wizard Options [Change](#)

I accept the terms of the SOLIDWORKS [License Agreement](#)

Estimated additional installation size: 0 KB

Cancel Help Back **Modify Now**

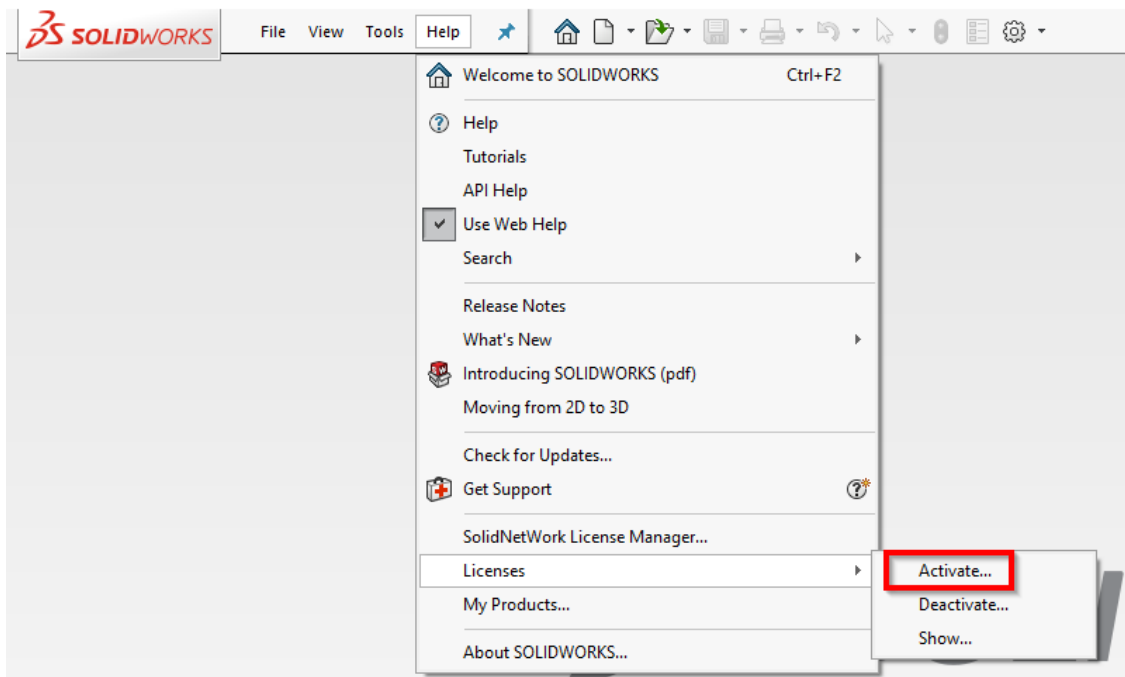
STEP 8: If a server search window pops up, choose **OK**:



STEP 9: To complete the process, click **Finish**.

ACTIVATION

STEP 10: Start SOLIDWORKS and navigate to **Help>Licenses>Activate**



STEP 11: Select the products being activated, select **automatically over the internet**, click **Next**

Activate/Deactivate Your SOLIDWORKS Product

To activate your SOLIDWORKS product you must request a license key from SOLIDWORKS. The Activation Wizard will help you collect the information necessary to activate your product.

Product: SOLIDWORKS Plastics

Select All

Deselect All

How would you like to activate?

Automatically over the Internet (recommended)

Manually via e-mail

We respect your privacy. To learn about how DS SolidWorks Corporation protects your privacy, please review our [Privacy Policy](#).

About... < Back Next > Cancel Help

STEP 12: Click **Finish**

